

Invitation to
(Attend [Online](#))

National and Mid-
Pacific ICT Centers

Winter 2010
ICT Educator
Conference

San Francisco
January 7-8, 2010



ICT

The [National ICT Center \(NICIT\)](#) is funded by the National Science Foundation (NSF) Advanced Technological Education (ATE) program to advance information and communications technologies (ICT) education at 2 year colleges in the U.S.

The [Mid-Pacific ICT \(MPICT\) Center](#) is funded by the NSF ATE program to coordinate, improve and promote the quality of ICT education, with an emphasis on 2-year colleges, in northern California, northern Nevada, southern Oregon, Hawaii and the Pacific Territories.

Information and Communications Technologies ([ICT](#)) is an umbrella term, widely used outside the U.S. and by the United Nations, to encompass all rapidly emerging, evolving and converging computer, software, networking, telecommunications, Internet, programming and information systems technologies.

For the second year in a row, the National and Mid-Pacific ICT Centers are joining forces to offer a Winter ICT Educator Conference, January 7-8, 2010, in San Francisco.

The event will feature presentations from industry sources of ICT educational resources and from the NICIT and MPICT educator communities on quality ICT educational practices.

Community college educators in ICT-related programs are invited to participate in this **free** event, by coming to San Francisco, by joining conference sessions live over the Internet using Elluminate, and/or by viewing archived presentations later via links on our website.

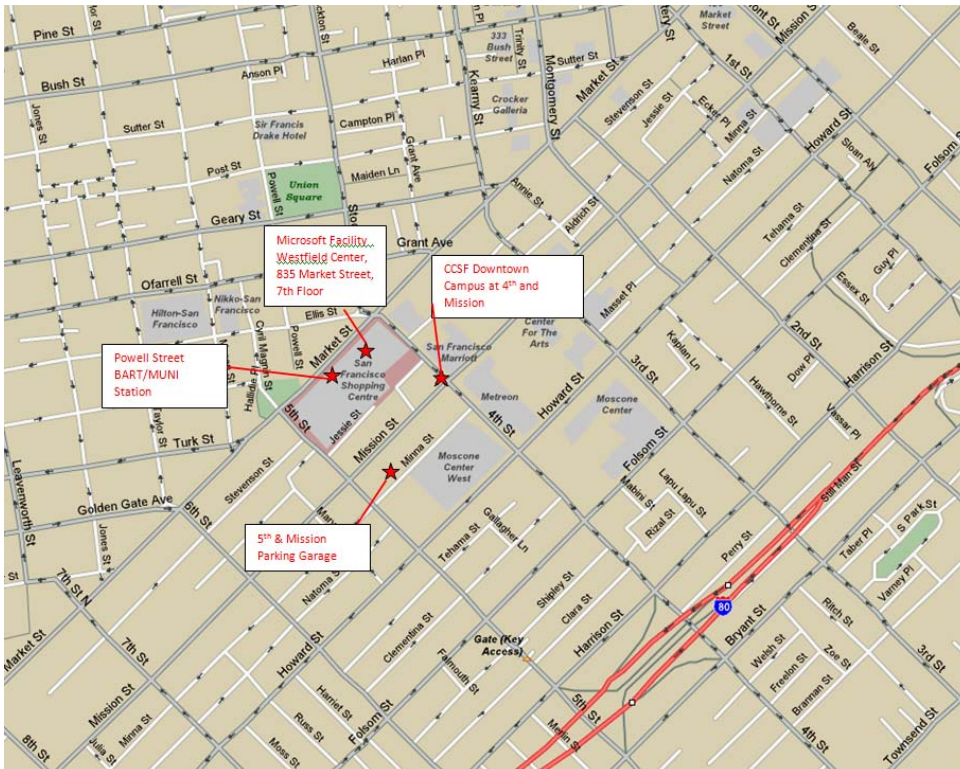
When and Where:

Thursday and Friday, January 7-8, 2010.

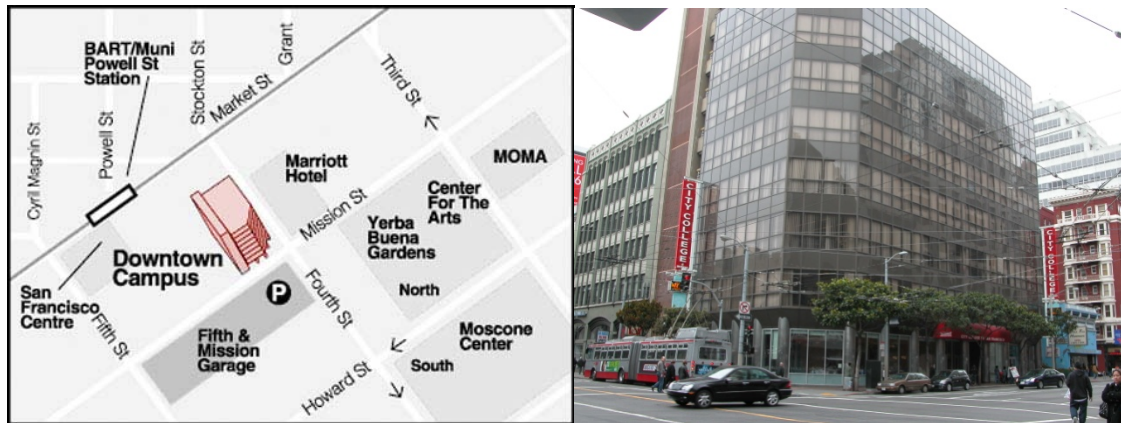
Both mornings, we start with an opening session and keynote at a 7th floor Microsoft facility in the [Westfield Center](#), at 835 Market Street, by the [Powell Street BART/MUNI stations](#). The Westfield Center is a world class shopping and business complex that hosts the west coast flagship of [Bloomingdale's](#) and the second-largest [Nordstrom](#) in the U.S.

At 10:30 each morning, we will then walk around the corner to the [City College of San Francisco Downtown Campus](#), on the corner of 4th and Mission Streets, for breakout sessions.

We'll start around 8:30 in the morning and finish around 7pm (including a social event) on Thursday and around 4pm (with a raffle) on Friday.



How To Get There:



From the Airport:

If you are flying into San Francisco International Airport (SFO), please be aware you can take the BART train from near the international terminal and avoid traffic. It costs \$8.10 to the Powell Street station, much less than a taxi (\$40) or shuttle (\$20), and it avoids expensive and difficult city parking.

From the Oakland International Airport (OAK), there is a shuttle to BART. Then the fare is \$3.80 to the Powell Street station, versus \$50 for a taxi.

Trains run roughly every 20 minutes. Fares and schedules are available at www.bart.gov.

From Elsewhere via Public Transportation:

Various directions to the Downtown Campus via bus or MUNI train are available here: <http://www.ccsf.edu/Campuses/Downtown/resources/directions.htm>.

By Car:

The downtown campus is at the corner of 4th and Mission Streets in Downtown San Francisco, caddy corner from the Metreon Theater, and directly across the street from the northwest corner of the 5th and Mission Garage (www.fifthandmission.com).

From points East, cross the Oakland/San Francisco Bay Bridge, exit at Fremont Street, turn left on Howard, right on 5th, right onto Minna Street and left into the 5th & Mission garage.

From points South, take US-101 North towards San Francisco. Continue to I-80 East towards Bay Bridge/Oakland. Exit Fourth Street. Bear Left on Bryant St. and turn Left onto Third Street. Turn Left onto Howard, right on 5th, right onto Minna Street and left into the 5th & Mission garage.

Registration:

Even at this late moment, you can [register on-line, for free!](#) - if you will really attend. *If you register and later determine that you will not attend, please let us know, so we can free limited conference space for others.*

Agenda:

The program is exceptional. Download it as an Excel file [here](#). Move your mouse over presentation titles for presentation descriptions. Move over presenter names for presenter bios. Click on a presentation title link to join the presentation remotely via the Internet and follow instructions at the bottom of the agenda.

The conference program features presentations in the areas of:

- Industry contributions to ICT education
- ICT educator/education best or high quality practices
- ICT education and workforce diversification efforts
- Resources for California ICT educators

Presentations are 50 minutes, and many include hands-on or demonstration elements.

Remote Access:

Because of difficulties traveling in this economic climate, and to expand the event's impact, it is possible to **attend some conference sessions remotely**, as it is happening and after the fact. It's not the same as being here. (People routinely cite networking at the event as one of its most valuable aspects.) But it is better than not experiencing the event at all. To attend **via the Internet**, download the [agenda](#) as an Excel file. Follow instructions on the bottom of the page, and click on a presentation title to join that session.

Travel Assistance:

Because it is difficult for so many to travel in these tough economic times, the ICT Centers are assisting many preregistered, qualified community college ICT educators attend this excellent event. Educators in ICT-related programs at community colleges in the [MP ICT region](#) who registered for the conference **by 12/9/09** are eligible for:

- a \$50 **stipend** if their community college is within 50 miles of San Francisco,
- a \$100 **stipend** if their community college is between 50 and 100 miles of San Francisco,
- **reimbursement** of up to \$500 of reasonable** transportation and hotel costs if their community college is more than 100 miles from San Francisco.

Other eligible community college ICT educators who registered by 12/9/09 are eligible for up to \$500 in eligible expense reimbursements from the National ICT Center.

****** Reasonable transportation and hotel costs are: 2-week advance purchase, economy class air or train ticket, mileage @ \$0.55/mile and hotel not more than \$200 for one night.

If you registered for the conference as of 12/9/09, received a confirmation of your registration, and are a community college educator in an ICT related program at a community college in the MPICT region, you should have already received an email indicating whether you are eligible for stipend or expense reimbursement. If eligible, go ahead and make your travel arrangements. You'll need to complete some paperwork, which you will receive at the conference, and you will later receive your stipend or expense reimbursement in the mail. If you did not receive an email, you are not eligible for stipend or expense reimbursement. You are welcome to attend without Center financial assistance.

Hotel Reservations:

Because there are so many hotel choices in San Francisco within easy walking distance of the conference, and because hotel preferences are so personal, we are not pushing any one hotel or other. For those who plan to stay overnight, please make your own plans and reservations. You may use a [list of hotels](#) near the conference, if that is helpful.

Presenter Support:

Each presentation room will have a dedicated technical support facilitator, computer, projector and loudspeakers. You are welcome to bring your own laptop, but you are also welcome to just bring your presentation materials on a USB storage device. Please be in your presentation room 10 minutes before your presentation begins, so your facilitator can orient you, understand your needs and prepare for your presentation. You can opt out of making your presentation available remotely at any time. Your facilitator will manage all of that for or with you. If you have special needs, please email pthiry@mpict.org or call (510) 701-1301.

San Francisco in January:

San Francisco in January can range from 75 and sunny to 50 and raining. It will not snow or sleet and will average 5 ½ hours of sun per day. There are many things to do in San Francisco: art, opera, concerts, museums, clubs, fabulous restaurants, beautiful nature, incredible views, theater, dance, boating, hiking, sports, adventure... For starting points on what's going on in

San Francisco, try: sfgate.com, onlyinsanfrancisco.com, baycityguide.com, usacitiesonline.com/cacountysanfrancisco.htm#attractions, or search online.

Questions:

If you have questions, please contact

- NCICT via [email](#) or at (413) 755-6550 or
- MPICT via [email](#) or at (415) 239-3600.